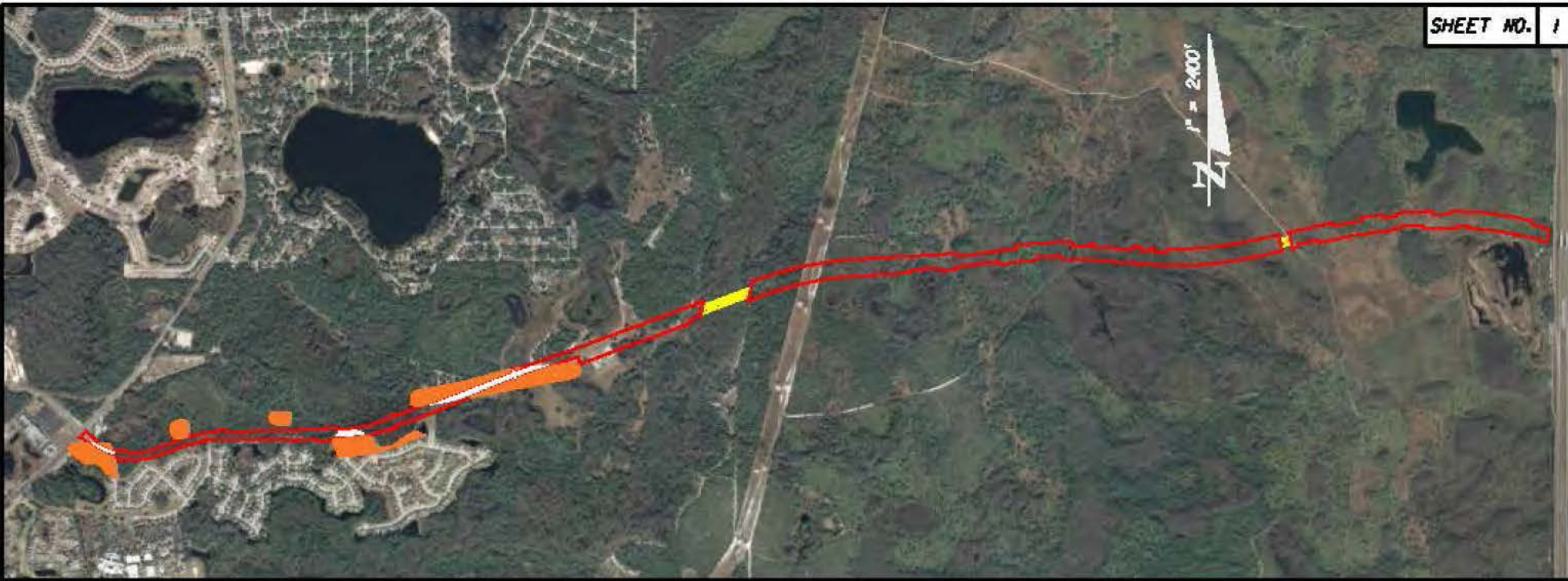


Appendix J-1

Figure J-1 Potential Cultural Resource Impacts Alternative 2 through 17



LEGEND

	HISTORIC STRUCTURE (DIRECT IMPACT)
	HISTORIC STRUCTURE (INDIRECT IMPACT)
	ARCHAEOLOGICAL AND HISTORIC SITES (DIRECT IMPACT)
	ARCHAEOLOGICAL AND HISTORIC SITES (INDIRECT IMPACT)

FIGURE J-1	
ALTERNATIVE	2



LEGEND

- HISTORIC STRUCTURE (DIRECT IMPACT)
- HISTORIC STRUCTURE (INDIRECT IMPACT)
- ARCHAEOLOGICAL AND HISTORIC SITES (DIRECT IMPACT)
- ARCHAEOLOGICAL AND HISTORIC SITES (INDIRECT IMPACT)

FIGURE J-1

ALTERNATIVE	3
--------------------	----------



FIGURE J-1
ALTERNATIVE 4



LEGEND

- HISTORIC STRUCTURE (DIRECT IMPACT)
- HISTORIC STRUCTURE (INDIRECT IMPACT)
- ARCHAEOLOGICAL AND HISTORIC SITES (DIRECT IMPACT)
- ARCHAEOLOGICAL AND HISTORIC SITES (INDIRECT IMPACT)

FIGURE J-1

ALTERNATIVE	5
--------------------	----------



LEGEND

- HISTORIC STRUCTURE (DIRECT IMPACT)
- HISTORIC STRUCTURE (INDIRECT IMPACT)
- ARCHAEOLOGICAL AND HISTORIC SITES (DIRECT IMPACT)
- ARCHAEOLOGICAL AND HISTORIC SITES (INDIRECT IMPACT)

FIGURE J-1

ALTERNATIVE	5
--------------------	----------



LEGEND

- HISTORIC STRUCTURE (DIRECT IMPACT)
- HISTORIC STRUCTURE (INDIRECT IMPACT)
- ARCHAEOLOGICAL AND HISTORIC SITES (DIRECT IMPACT)
- ARCHAEOLOGICAL AND HISTORIC SITES (INDIRECT IMPACT)

FIGURE J-1

ALTERNATIVE	7
--------------------	----------

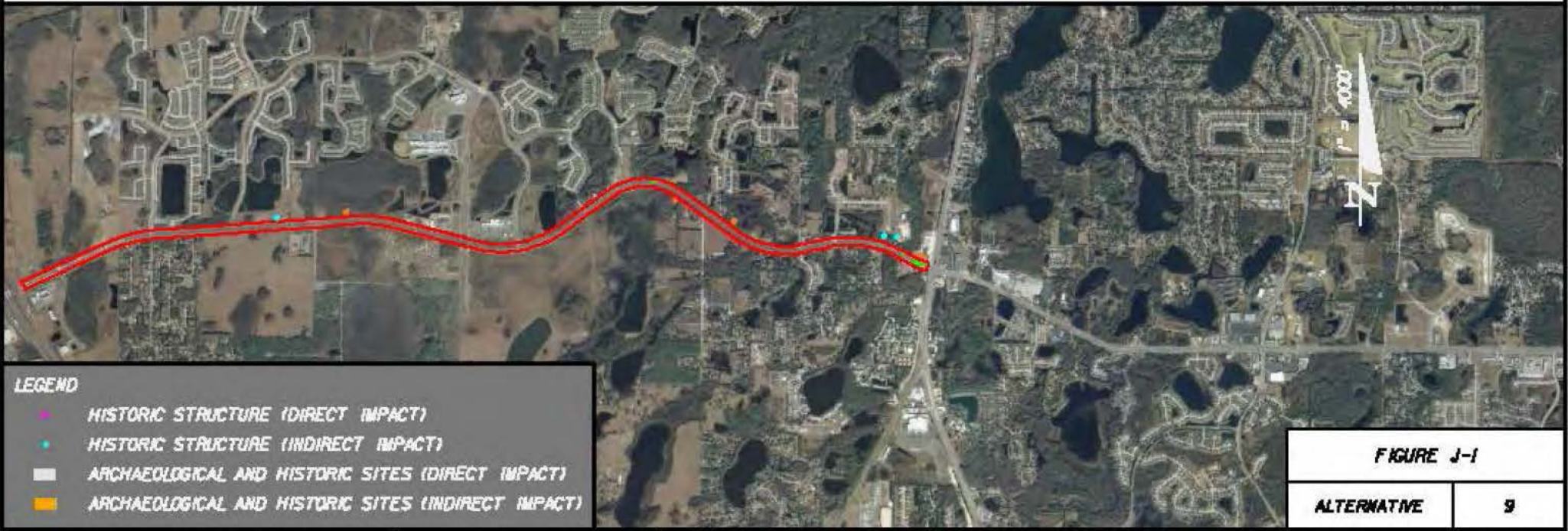
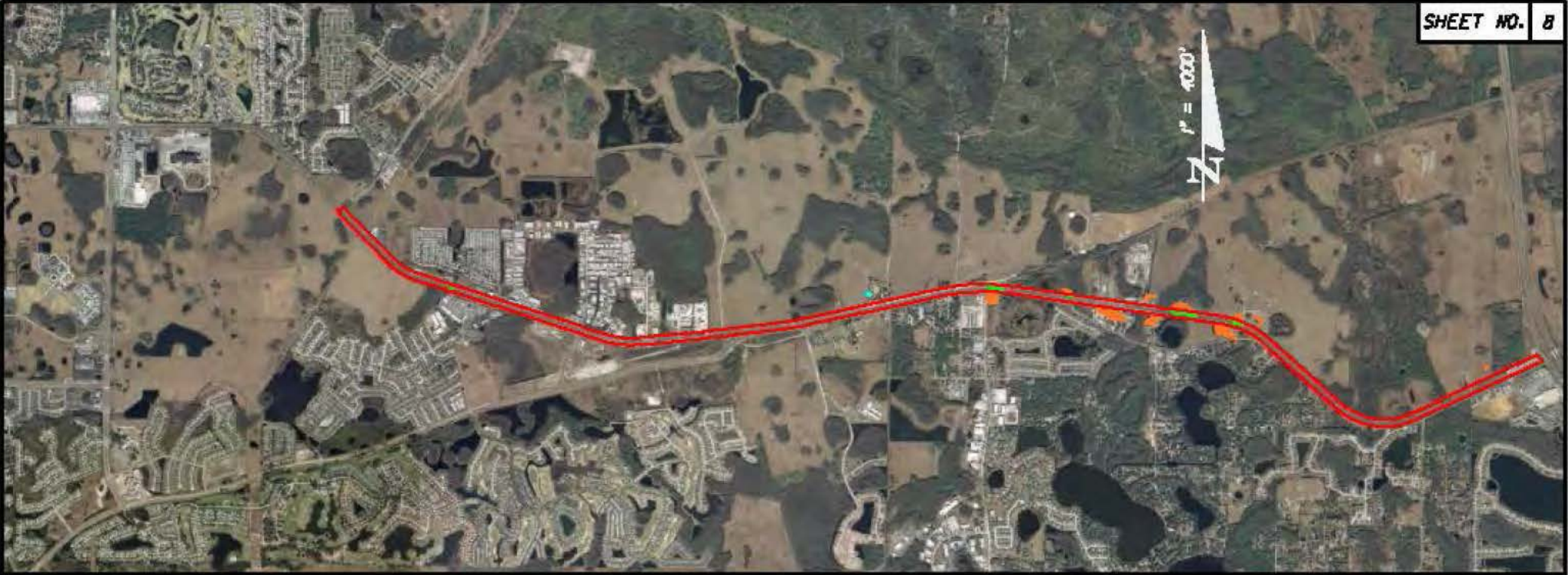


LEGEND

- HISTORIC STRUCTURE (DIRECT IMPACT)
- HISTORIC STRUCTURE (INDIRECT IMPACT)
- ARCHAEOLOGICAL AND HISTORIC SITES (DIRECT IMPACT)
- ARCHAEOLOGICAL AND HISTORIC SITES (INDIRECT IMPACT)

FIGURE J-1

ALTERNATIVE	B
--------------------	----------

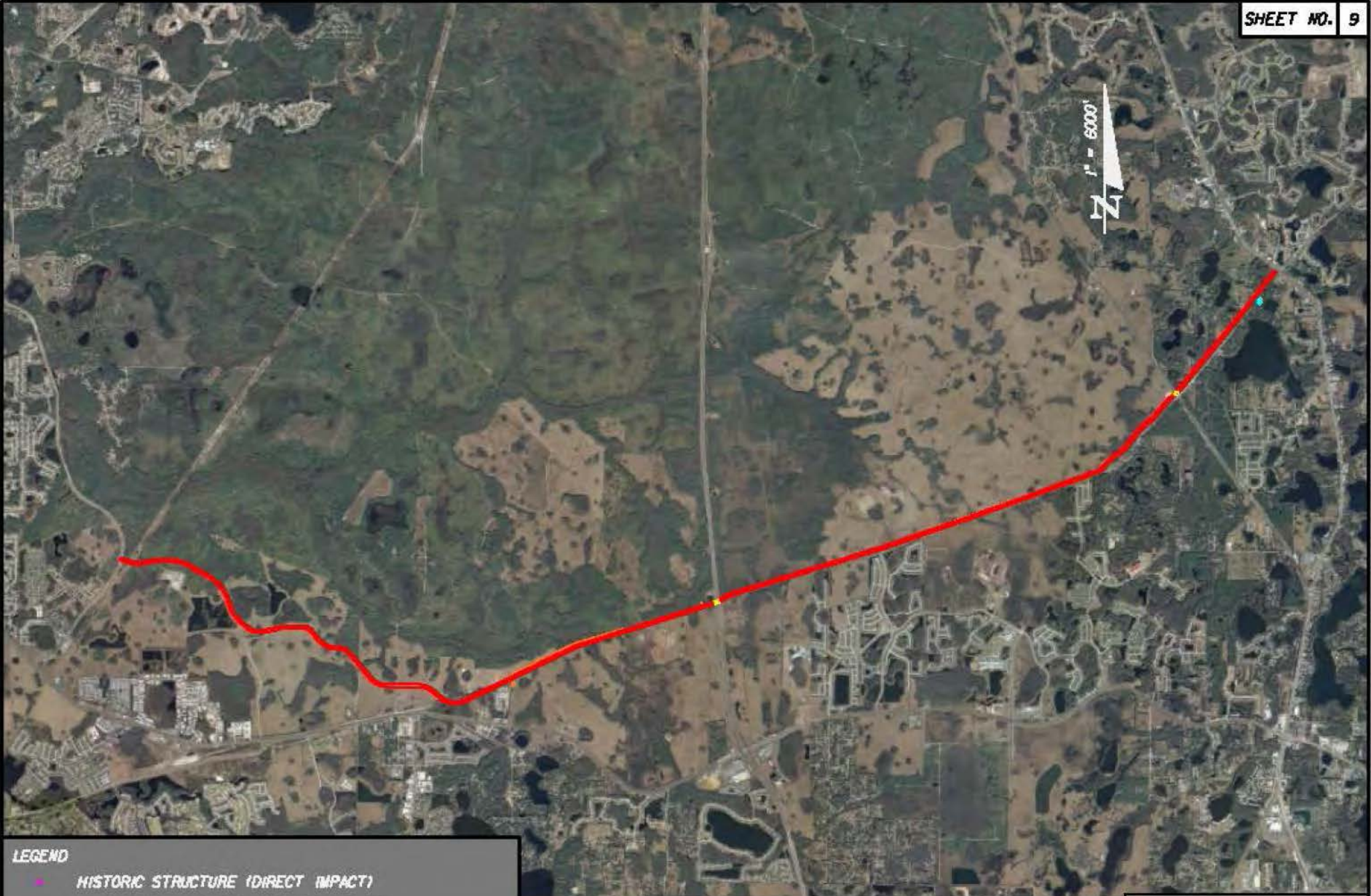


LEGEND

●	HISTORIC STRUCTURE (INDIRECT IMPACT)
●	HISTORIC STRUCTURE (DIRECT IMPACT)
■	ARCHAEOLOGICAL AND HISTORIC SITES (INDIRECT IMPACT)
■	ARCHAEOLOGICAL AND HISTORIC SITES (DIRECT IMPACT)

FIGURE J-1

ALTERNATIVE	9
--------------------	----------



LEGEND

■	HISTORIC STRUCTURE (DIRECT IMPACT)
■	HISTORIC STRUCTURE (INDIRECT IMPACT)
	ARCHAEOLOGICAL AND HISTORIC SITES (DIRECT IMPACT)
	ARCHAEOLOGICAL AND HISTORIC SITES (INDIRECT IMPACT)

FIGURE J-1	
ALTERNATIVE	ID

6885 EAST FOREST AVENUE, TAMPA, FLORIDA 33606
 (813) 988-0000 THOMAS J. ROYCE, P.E., M.S. 33002

NV5, INC.

PASCO COUNTY

RIDGE ROAD EXTENSION

CULTURAL RESOURCES



LEGEND

- HISTORIC STRUCTURE (DIRECT IMPACT)
- HISTORIC STRUCTURE (INDIRECT IMPACT)
- ARCHAEOLOGICAL AND HISTORIC SITES (DIRECT IMPACT)
- ARCHAEOLOGICAL AND HISTORIC SITES (INDIRECT IMPACT)

FIGURE J-1

ALTERNATIVE	#

8888 EAST FOREST AVENUE, TAMPA, FLORIDA 33610
 (813) 988-8888 THOMAS J. ROYBROUGH, P.E., DR. ENGINEER

NV5, INC.

PASCO COUNTY

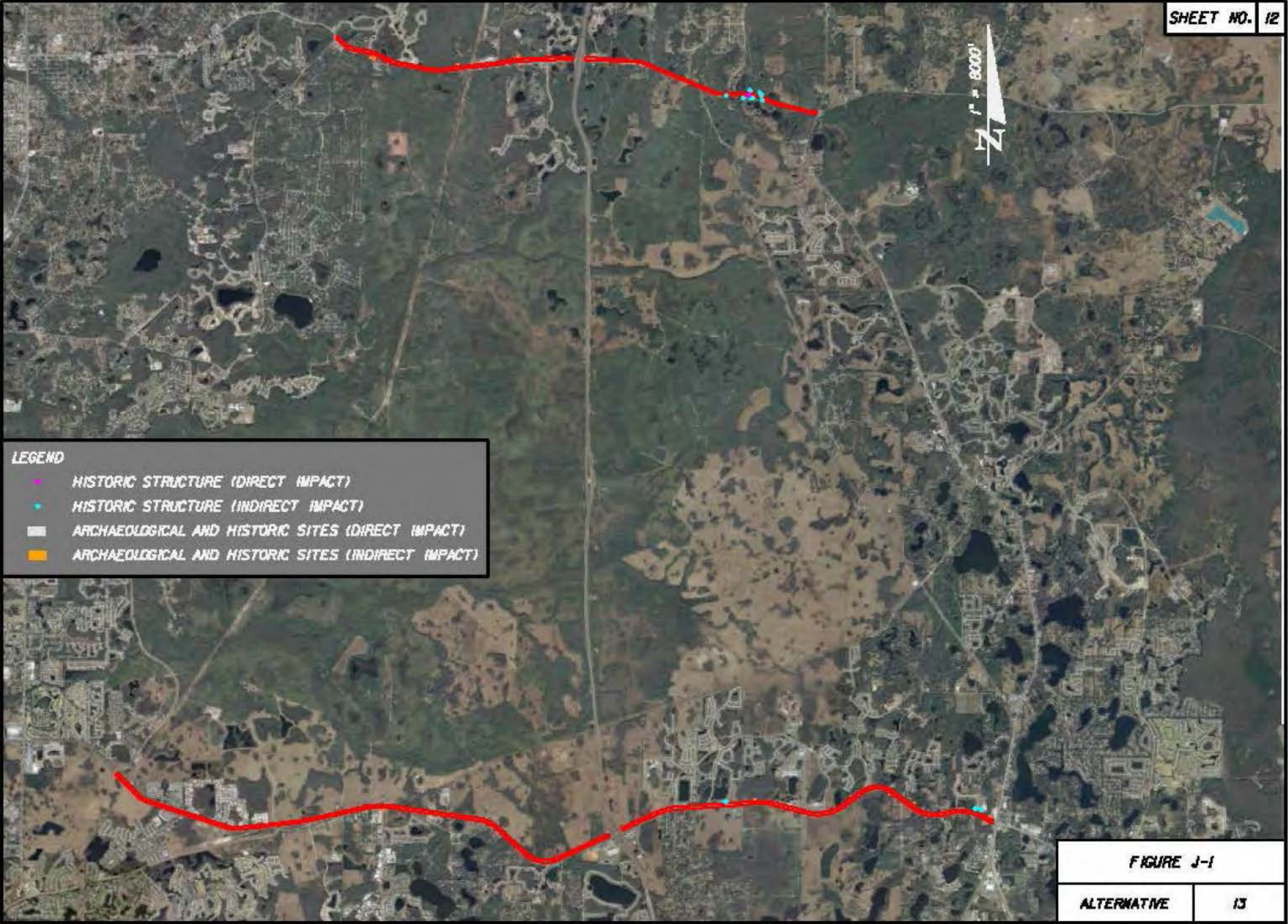
RIDGE ROAD EXTENSION

CULTURAL RESOURCES



LEGEND	
●	HISTORIC STRUCTURE (DIRECT IMPACT)
●	HISTORIC STRUCTURE (INDIRECT IMPACT)
	ARCHAEOLOGICAL AND HISTORIC SITES (DIRECT IMPACT)
	ARCHAEOLOGICAL AND HISTORIC SITES (INDIRECT IMPACT)

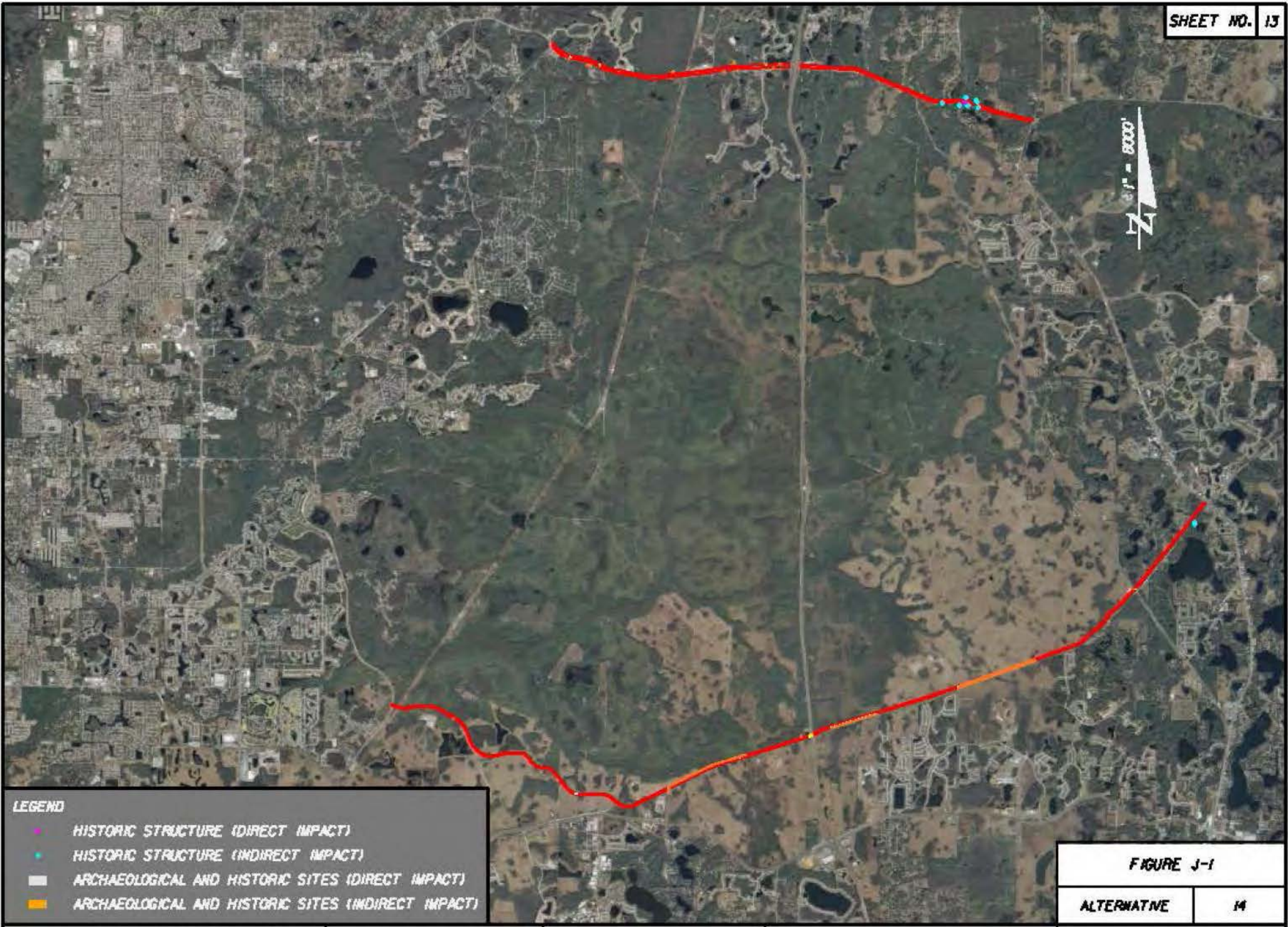
FIGURE J-1	
ALTERNATIVE	12



LEGEND

- HISTORIC STRUCTURE (DIRECT IMPACT)
- HISTORIC STRUCTURE (INDIRECT IMPACT)
- ▭ ARCHAEOLOGICAL AND HISTORIC SITES (DIRECT IMPACT)
- ▭ ARCHAEOLOGICAL AND HISTORIC SITES (INDIRECT IMPACT)

FIGURE J-1	
ALTERNATIVE	13



1" = 8000'
N

FIGURE J-1

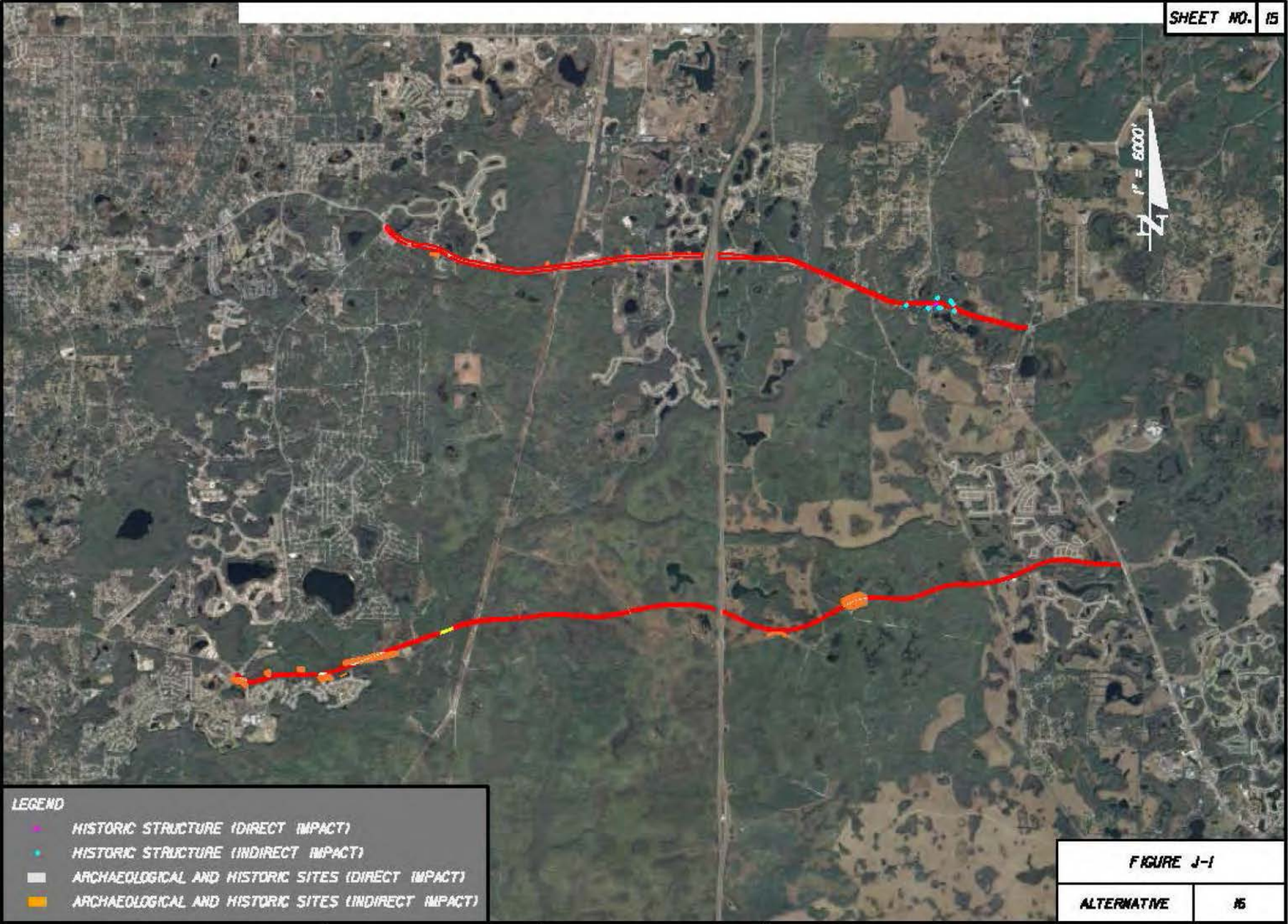
ALTERNATIVE	14
-------------	----



LEGEND

- HISTORIC STRUCTURE (DIRECT IMPACT)
- HISTORIC STRUCTURE (INDIRECT IMPACT)
- ARCHAEOLOGICAL AND HISTORIC SITES (DIRECT IMPACT)
- ARCHAEOLOGICAL AND HISTORIC SITES (INDIRECT IMPACT)

FIGURE J-1	
ALTERNATIVE	15



LEGEND

- HISTORIC STRUCTURE (DIRECT IMPACT)
- HISTORIC STRUCTURE (INDIRECT IMPACT)
- ▭ ARCHAEOLOGICAL AND HISTORIC SITES (DIRECT IMPACT)
- ▭ ARCHAEOLOGICAL AND HISTORIC SITES (INDIRECT IMPACT)

FIGURE J-1

ALTERNATIVE	#5
--------------------	-----------



LEGEND

●	HISTORIC STRUCTURE (DIRECT IMPACT)
●	HISTORIC STRUCTURE (INDIRECT IMPACT)
	ARCHAEOLOGICAL AND HISTORIC SITES (DIRECT IMPACT)
	ARCHAEOLOGICAL AND HISTORIC SITES (INDIRECT IMPACT)

FIGURE J-1	
ALTERNATIVE	17